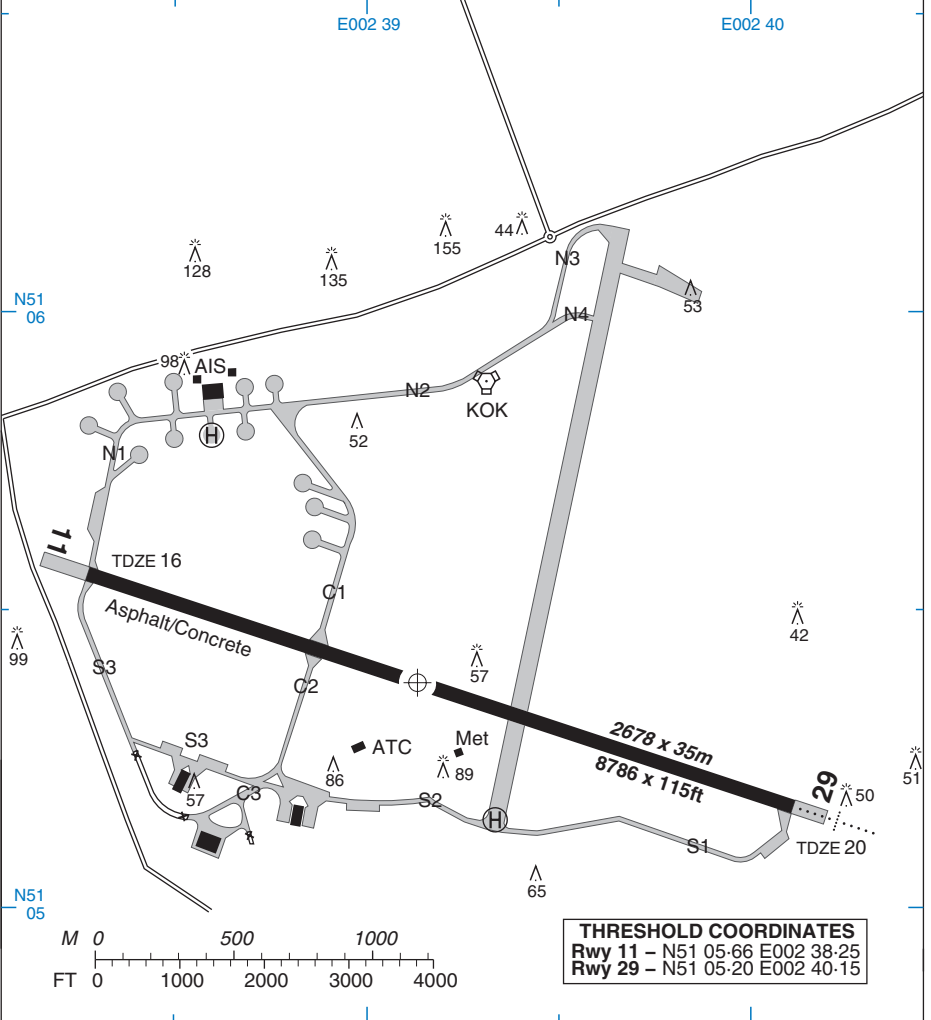


AERODROME

KOKSIJDE

Elev 20	Var 1°W	ARP	N51 05-42 E002 39-17 (WGS 84)	25 SEP 08	D1
KOKSIJDE GROUND 308-775		TOWER 231-800 122-1		APPROACH 235-050 122-5	



RWY	SLOPE	LDA m/ft	APP LGT		RWY LGT
11(109°T)	0-06%U	2213/7260	P 3-25°	CL1B	RTHL(L):REDL(L)
29(289°T)	0-06%D	2583/8475	P 3°		

1. **CAUTION.** Uncontrolled civilian traffic at nearby DUNKIRK GHYVELDE (N51 02 E002 33).
2. **CAUTION.** Extensive heli activity on and in vicinity of AD.
3. **CAUTION.** Not all twys are usable by large transport acft. Adhere strictly to taxi instructions.  
Twy width 15m /49ft.
4. AD only avbl for Military use.
5. Circuits. Rwy 11 RHC.
6. FOD hazard exists due to poor condition of rwy.