

ATIS *

284.2

BAY APP CON

135.4 354.1

ALAMEDA TOWER *

127.05 384.4

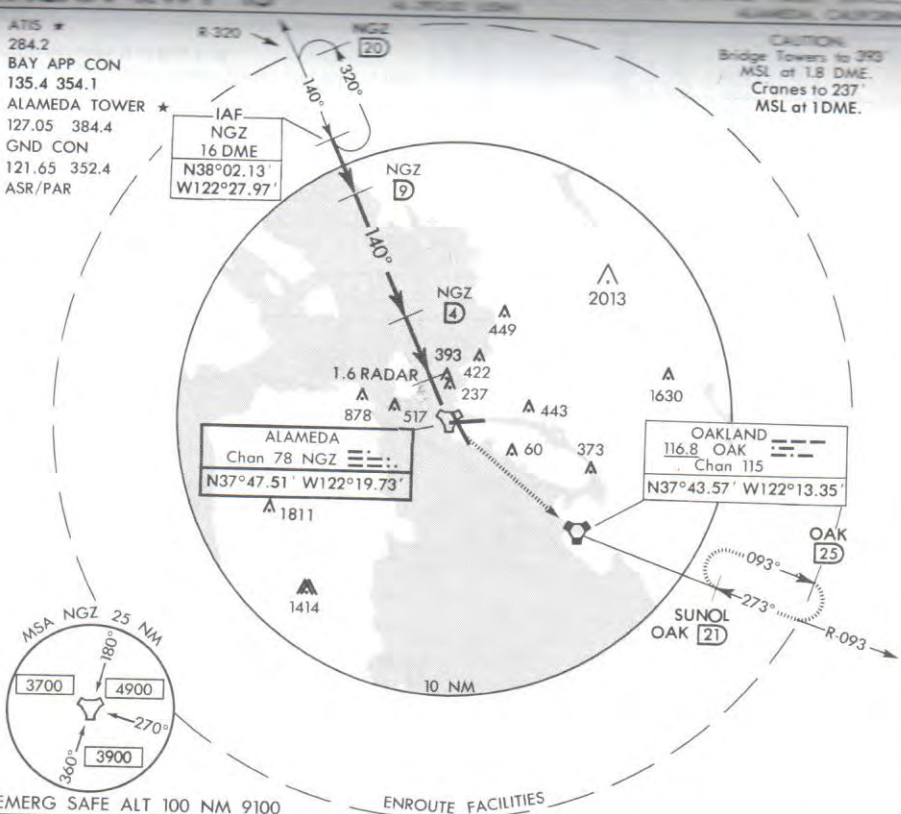
GND CON

121.65 352.4

ASR/PAR

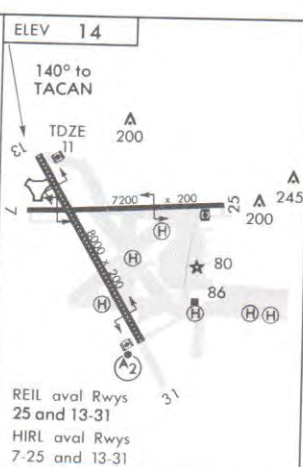
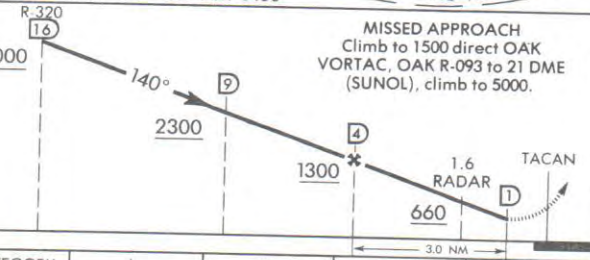
IAF
NGZ
16 DME
N38°02.13' W122°27.97'

CAUTION
Bridge Towers to 393
MSL at 1.8 DME
Cranes to 237'
MSL at 1 DME.



EMERG SAFE ALT 100 NM 9100

ENROUTE FACILITIES



| CATEGORY | A | B | C | D |
|-----------------|-------------------|---------------------------|---------------------------|---|
| S-13 | 660-1 649 (700-1) | 660-1 3/4 649 (700-1 3/4) | 660-2 649 (700-2) | |
| CIRCLING | NOT AUTHORIZED | | | |
| S-PAR 13 | 211-3/4 200 | (200-3/4) | GS 3.5° | |
| S-13 W/PAR SDF* | 500-1 489 (500-1) | 500-1 1/4 489 (500-1 1/4) | 500-1 1/2 489 (500-1 1/2) | |

*Descent below 660 authorized only after receipt of 1.6 NM radar (PAR) fix.

TACAN RWY 13

37°47'N-122°19'W

ALAMEDA, CALIFORNIA
ALAMEDA NAS (NIMITZ FIELD) (KNGZ)

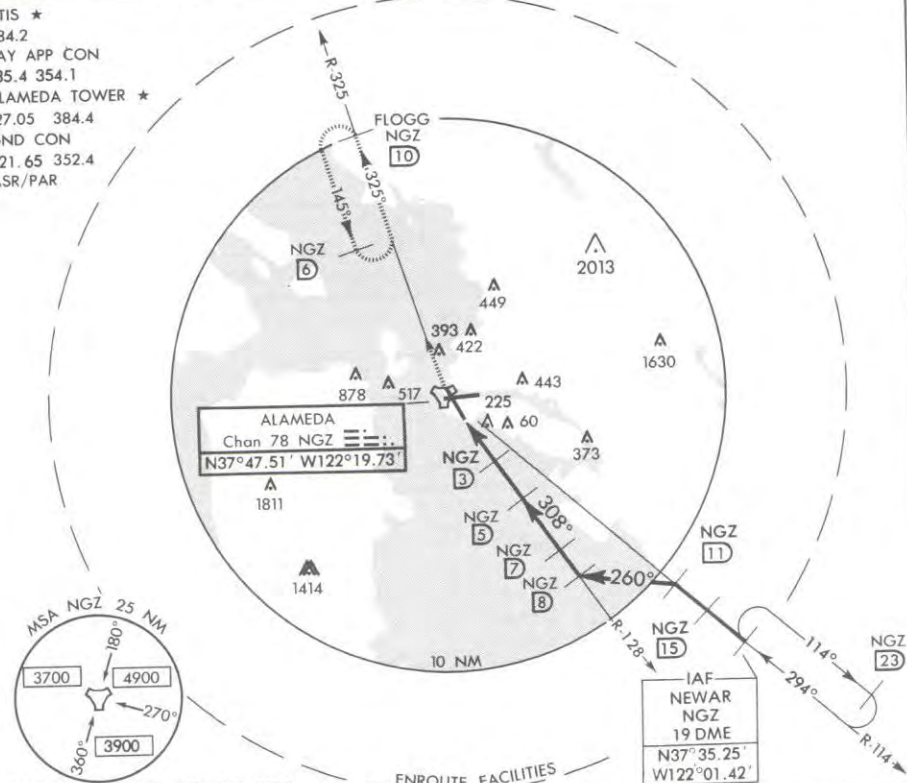
TACAN RWY 31

AL-293.01 (USN)

ALAMEDA NAS (NIMITZ FIELD) (KNGZ)

ALAMEDA, CALIFORNIA

ATIS ★
284.2
BAY APP CON
135.4 354.1
ALAMEDA TOWER ★
127.05 384.4
GND CON
121.65 352.4
ASR/PAR

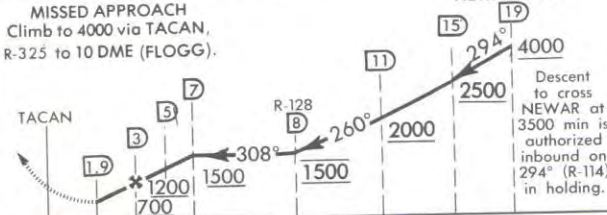


EMERG SAFE ALT 100 NM 9100

ENROUTE FACILITIES

MISSED APPROACH
Climb to 4000 via TACAN,
R-325 to 10 DME (FLOGG).

NEWAR R-114

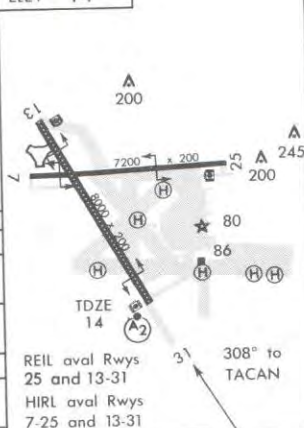


| CATEGORY | A | B | C | D |
|--------------------|--------|-------------|------------------------|------------------------|
| S-31* | 480/40 | 466 (500-¾) | 480/50 466 (500-1) | 480/60 466 (500-1¼) |
| CIRCLING** | 540-1 | 526 (600-1) | 540-1½ 526 (600-1½) | 580-2 566 (600-2) |
| S-PAR 31* | 114/16 | 100 (100-¼) | GS 3.0° | |
| S-PAR 31* W/OGS | 360/40 | 346 (400-¾) | 360/50 346 (400-1) | |

*When ALS inop, increase vis ¼ mile; PAR ¼ mile.

**Cir not auth N of Rwy 7-25.

ELEV 14



REIL avar Rws
25 and 13-31
HIRL avar Rws
7-25 and 13-31